



WILLARD STRAIGHT HALL

CORNELL UNIVERSITY

136 HO PLAZA ITHACA, NY 14853

ANDREW JOSEPH and PRISCILLA LEE

PHOTOgraphs (OUTSIDE BUILDING)



OUTSIDE (con't)



interior



interior (con't)



interior (con't)



interior (con't)



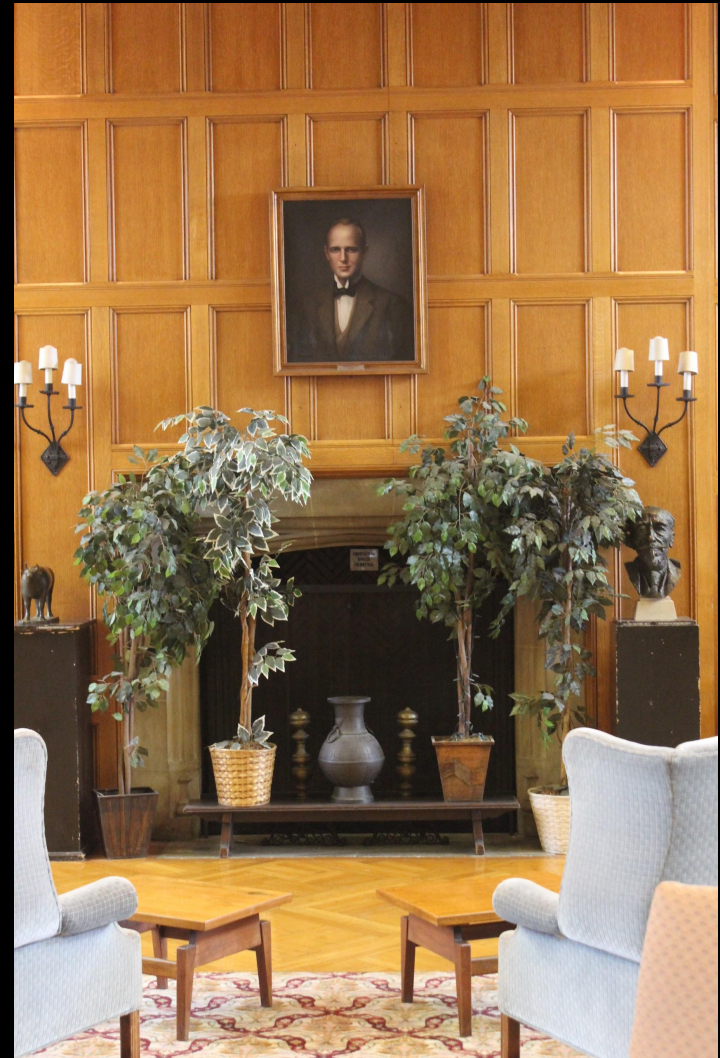
interior (con't)



interior (con't)



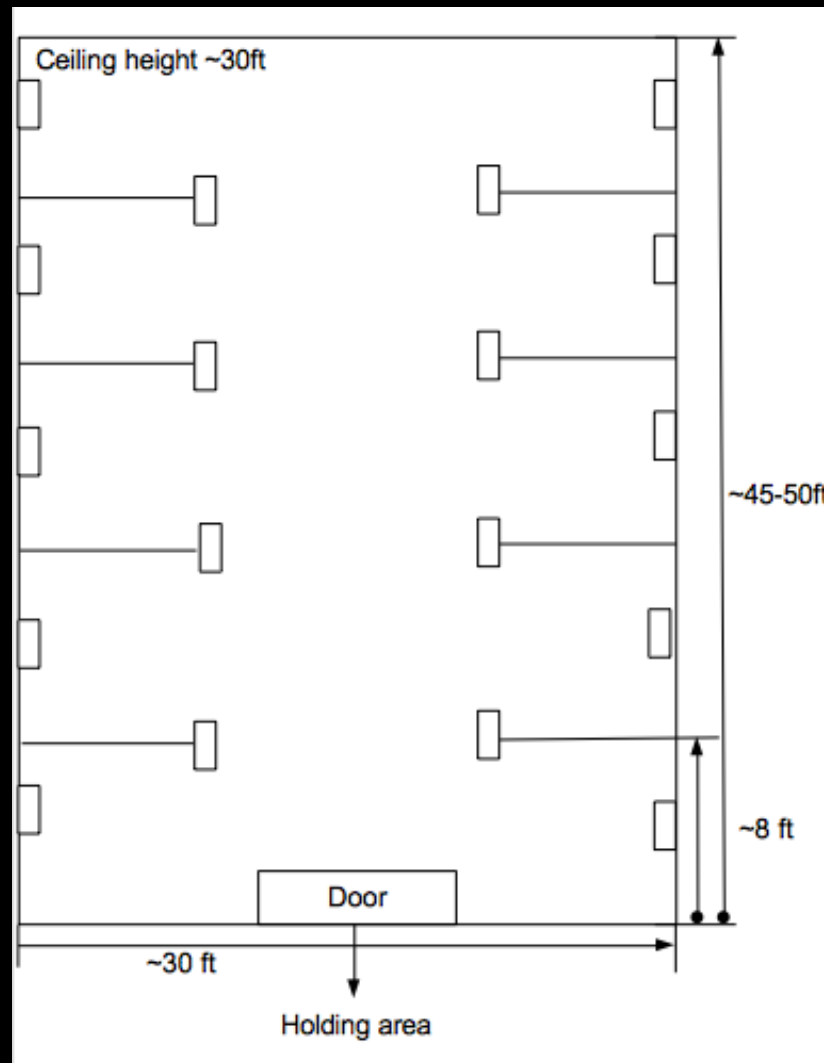
interior (con't)

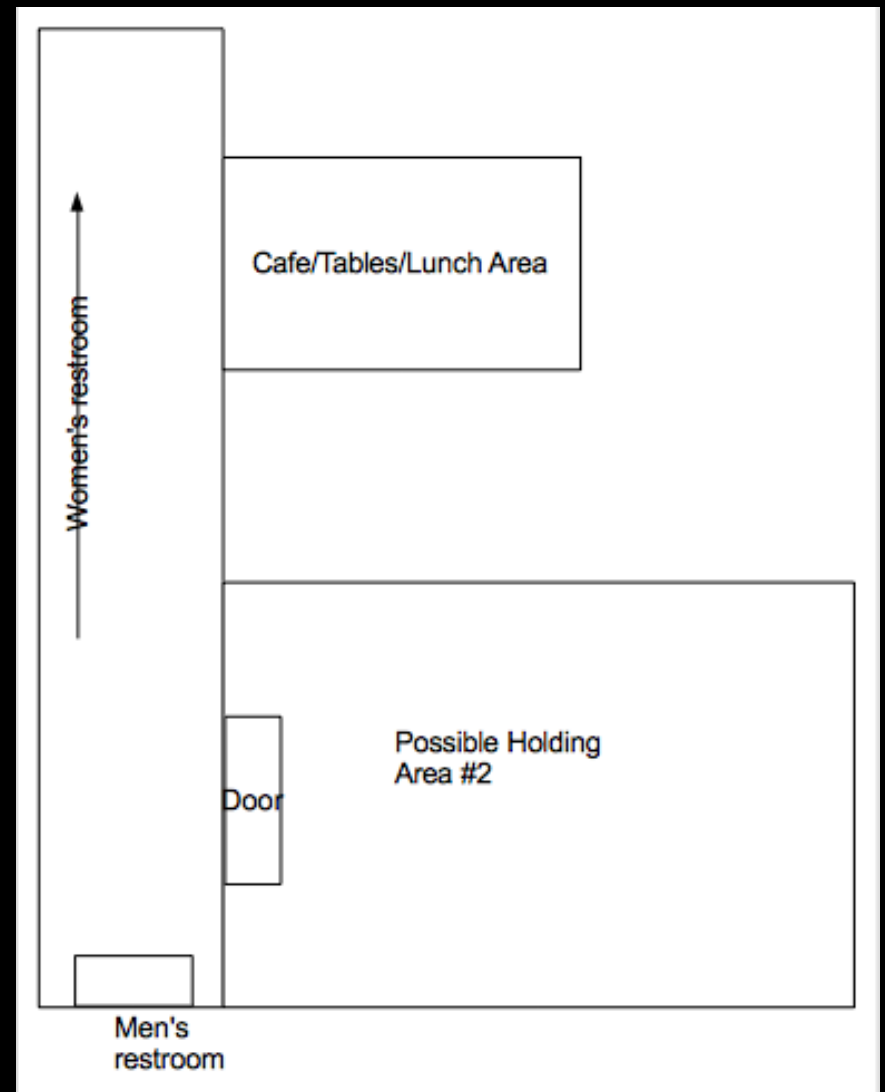
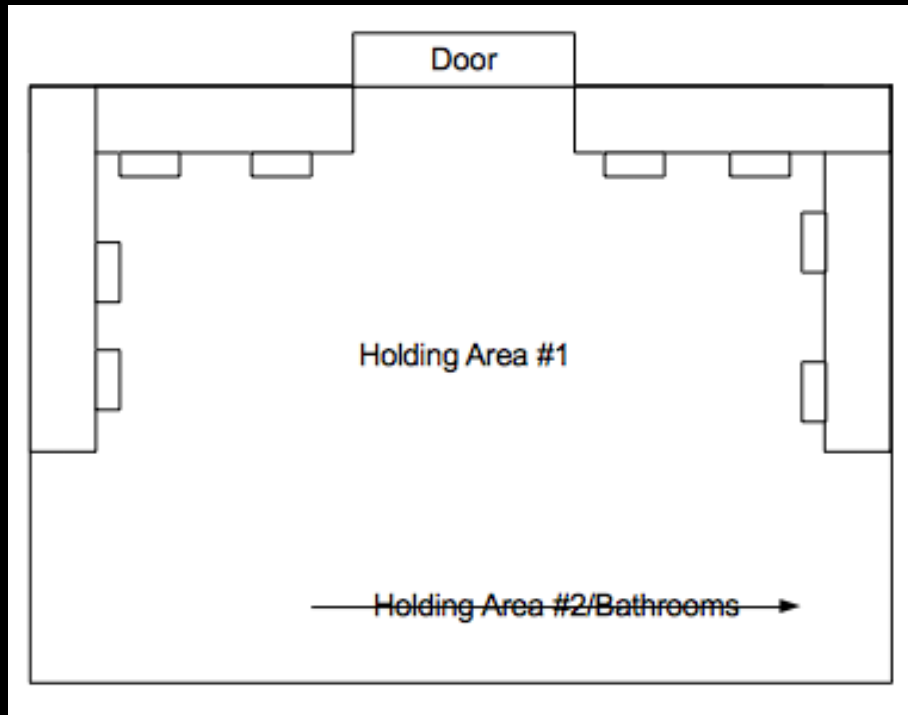


interior (con't)



Location Diagram





HOLDING Areas/BATHrooms/LUNCH Area



HOLDING Area (cont)



HOLDING Area (cont)



HOLDING Area #2



BATHrooms

CONTACTS

WILLARD STRAIGHT HALL COORDINATOR

525 WILLARD STRAIGHT

PHONE NUMBER: 607) 255-3513

EMAIL: WSH_reservation@cornell.edu

TO RESERVE: [HTTP://REGISTRAR.SAS.CORNELL.EDU/SCHED/R25/](http://registrar.sas.cornell.edu/sched/R25/)

DIRECTIONS



mapquest

Trip to:

136 Ho Plz

Ithaca, NY 14853-8202

2.53 miles / 6 minutes

Notes



953 Danby Rd, Ithaca, NY 14850-7000

Download
Free App



1. Start out going **north** on **RT-96B / Danby Rd** toward **Alumni Cir.** Continue to follow **RT-96B.** [Map](#)

1.3 Mi
1.3 Mi Total ✕



2. **RT-96B** becomes **S Aurora St.** [Map](#)

0.08 Mi
1.4 Mi Total ✕



3. Turn **right** onto **E State St.** [Map](#)
E State St is just past Hudson St

0.3 Mi
1.7 Mi Total ✕



4. Turn **left** onto **Stewart Ave.** [Map](#)
Stewart Ave is just past Elston Pl
If you reach Ferris Pl you've gone a little too far

0.4 Mi
2.1 Mi Total ✕



5. Turn **slight right** onto **Campus Rd.** [Map](#)
Campus Rd is just past Edgemoor Ln

0.4 Mi
2.5 Mi Total ✕



6. Turn **left** onto **Sage Ave.** [Map](#)
Sage Ave is just past Ho Plz
If you reach East Ave you've gone a little too far

0.08 Mi
2.5 Mi Total ✕



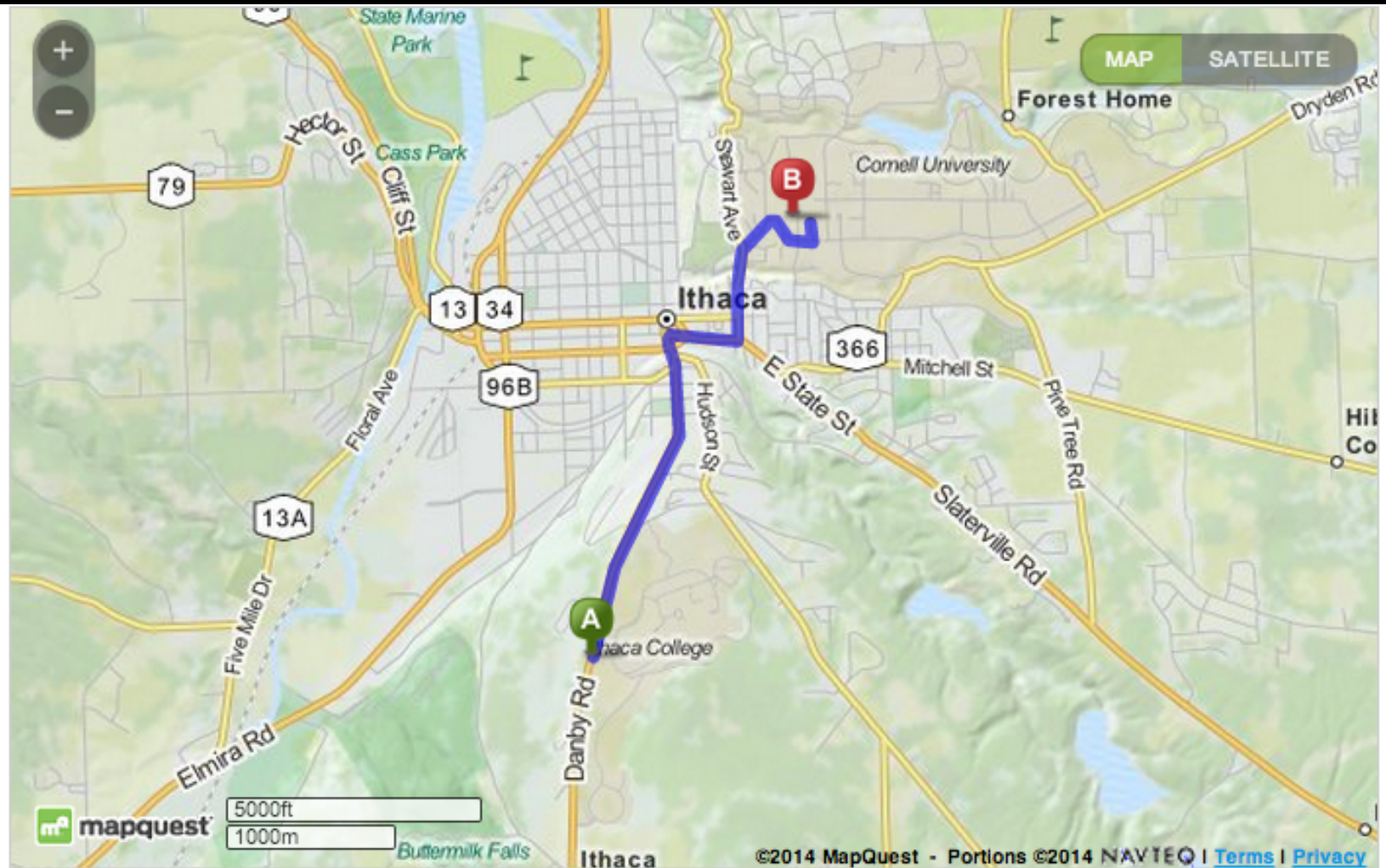
7. **136 HO PLZ.** [Map](#)
Your destination is at the end of Sage Ave



136 Ho Plz, Ithaca, NY 14853-8202

Total Travel Estimate: **2.53 miles** - about 6 minutes

maps (cont)



Parking Space



Parking Space

summary

THIS LOCATION OFFERS AN EXTREMELY VERSATILE ARRAY OF OPTIONS DUE TO THE LARGE AMOUNTS OF SPACE, NEW AND OLD FURNITURE, THE LARGE QUANTITY OF TABLES AND CHAIRS, AND THE OLD-FASHIONED LOOK OF THE LOCATION. WE IMAGINE THE LOCATION BEING USED AS A MEDICAL OFFICE, THERAPIST'S OFFICE, DINING ROOM, WAITING ROOM, LIBRARY, CAFE, HOTEL, AND MANY OTHER TYPICAL INTERIOR AND EXTERIOR PLACES FOR A PRODUCTION. THE LOCATION CONTAINS ALL OF THE ASPECTS OF AN EXCELLENT LOCATION, SUCH AS THE PARKING AVAILABILITY (WHICH IS JUST OUTSIDE THE BUILDING).. THE ACCESSIBILITY AND ABUNDANCE OF OUTLETS AND SPACE TO STORE EQUIPMENT AND THE CAST.

THROUGHOUT THE LOCATION, IT IS EASY TO FIND RESTROOMS, WATER FOUNTAINS, SEATING AREA AND FOOD SERVICES FOR THE CAST AND CREW. THERE ARE WINDOWS FOR NATURAL LIGHTING (WITH BLINDS), FLUORESCENT LIGHTS WHICH COULD BE TURNED ON AND OFF, AND PLENTY OF SPACE TO BRING MORE LIGHTING IN. LASTLY, THE LOCATION HAS BEEN USED BY STUDENTS IN THE PAST FOR PRODUCTIONS AND HAVE REPORTED NO PROBLEMS WITH ELECTRICAL GENERATORS AS WELL AS THE PROCESS OF OBTAINING THE SPACE. THIS LOCATION IS PERFECT FOR A STUDENT RUN PRODUCTION DUE TO ITS ACCESSIBILITY AND VERSATILITY.